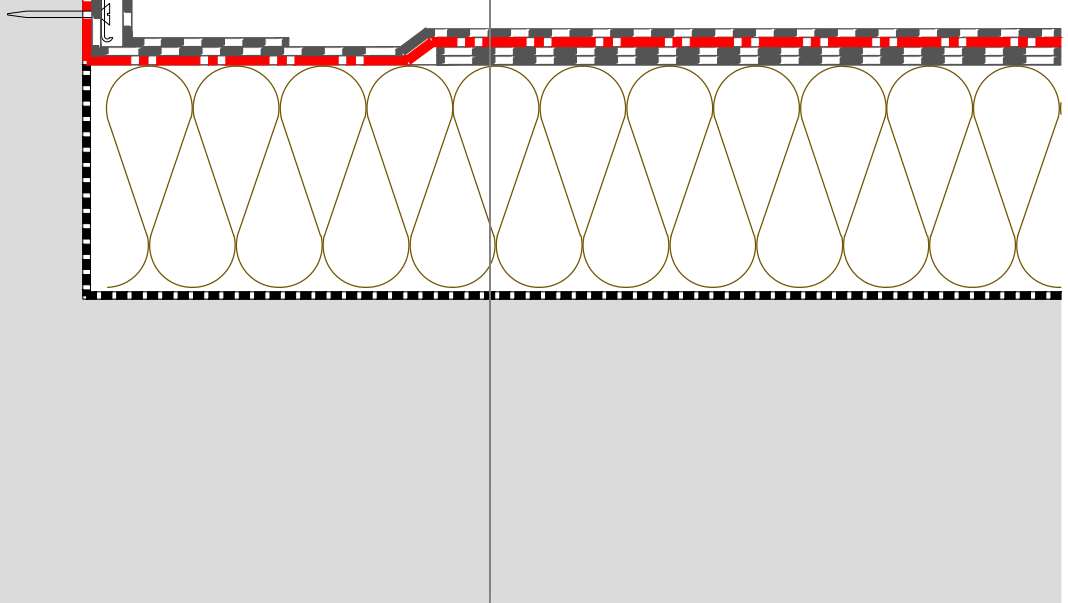


Synthetic roofing membrane  
***Controlit GS***  
*electrically conductive underlay*  
 Old bitumen toplayer  
 Old bitumen underlayer  
 Insulation  
 Vapor barrier  
 Reinforced concrete ceiling



**Notes:**

- Controlit GS Single Ply - electrically conductive underlay 165 gsm.
- Reaction-to-fire behavior A2.
- Electrical resistivity < 1000 Ohms/sq .
- Controlit underlay provides waterproofing scanning quickly and non-destructively using the high voltage electronic leak detection (ELD) method. For non-conductive waterproofing membranes.
- Install right under inspectable waterproofing.
- Controlit connection contacts provide connection between inspection device and electrically conductive Controlit underlay.
- The base of Controlit connection contact must be connected with the electrically conductive Controlit underlay.
- All connection contacts must be in the zone of lightning protection.
- To ensure the watertightness of contact, a special collar for synthetic waterproofing must be used.

**Controlit**®

**Title of drawing:**  
 Parapet detail - bitumen waterproofing renovation

**Date:**  
 28.05.2021.

**Technical drawings by:**  
 Dace Sprukte

**Scale:**  
 1:5